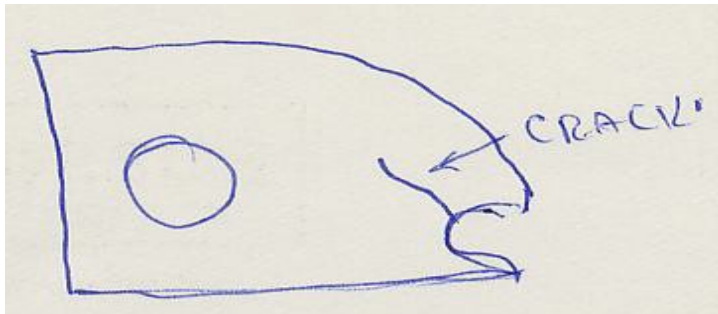


Beech A36, Cracked Flap Leading Edge Nose Rib, ATA 5753

(A repair station technician submits this and the next three Beech discrepancy reports.)

At an annual inspection, the repair team found both the left and right flap attach point ribs cracked." An additional note indicates both the flange and web on these parts were cracked or broken. Flap Nose Rib P/N 35-165050-84; L/H and R/H P/N's 35-165050-78 and -79, respectively.



Part Total Time: 3,144.9 hours.